

Refrigerated Vans

Trailer Fleet Services from GE offers you an exclusive source to handle the challenges maintaining the life of your trailer fleet. And as a trusted supplier to the trucking industry for more than 50 years, you can have confidence in GE's long-standing experience.

Our fleet of "smart reefers" are coupled with the lowest UA value insulated trailers (25% more than the industry average) and are the highest spec'd in the industry. The result is a fleet of trailers that provide you with:

- > A full line of services from finance packages to sale/leaseback options
- > Reefer leasing and rental programs custom designed to your specifications
- > Fully staffed and technically trained emergency response specialists 24/7, plus a network of Carrier and Thermo King authorized repair facilities throughout North America

Features

- > 3,200 cfm airflow/56,000 BTU capacity @ 35°F*; 25,000 BTU capacity @ -20°F*
- > 30% more cooling capacity than other reefers (20% more capacity in deep frozen range)
- > 10% more fuel efficient than other reefers
- > 31% faster "pull down" than other reefers
- > Trailer prep'd for door cut off switches†
- > Ultra-fresh or modulation valve for tighter temperature control†
- > Rear remote control panel†
- > Composite stringers†

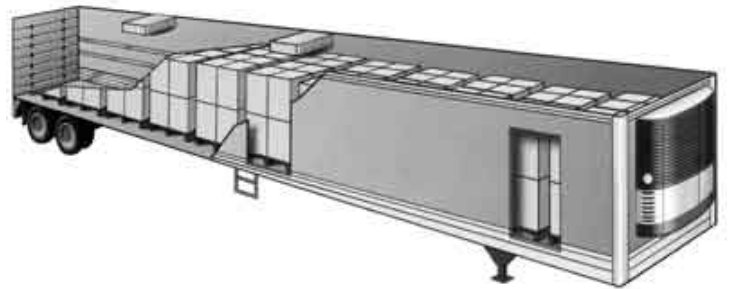
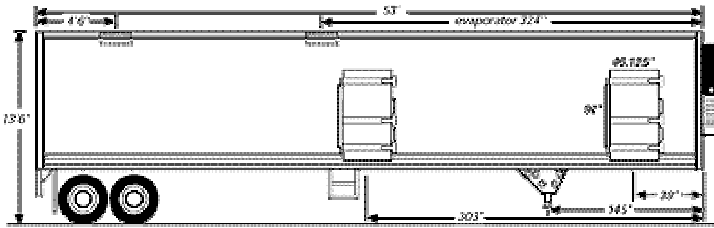
Benefits

- > 15% more air flow than other reefers which means more consistent/sustained temperature control
- > Transport almost anything, in any temperature range, without compromising product integrity
- > *Less engine hours, less maintenance, higher residual value, higher safety, more convenient, more productivity*
- > Higher product integrity, longer shelf life, more revenue
- > Precise temperature control prevents top freezing of sensitive products

*Based on new ULTIMA line
† available in select locations



53' Multi-Temp Reefer Specifications



- > 16' grated walk ramp with spring-assist
- > Front door w/retractable step, rear door w/fixed stirrup step
- > Roll-up rear door with grab handle
- > Grab handles on both doors
- > Horizontal non-skid steps on ICC w/dock lock feature
- > 22.5 lo pro tires, tire carrier
- > Anti-lock brakes
- > 2 evaporators
- > Interior dome light package with switches
- > 3" insulation side walls, 4" front, 3" roof and floor
- > Heavy-duty, safety-grip, flat floor
- > 50 gallon aluminum fuel tank
- > 12" heavy-duty aluminum scuff liner
- > Auto-start/cycle sentry on all trailers
- > Two rows galvanized recessed E-track
- > Air return bulkhead on front wall
- > Hub piloted wheels
- > Two moveable bulkhead for compartmentalization
- > Stainless steel rear frame
- > Aluminum cross members in bay area
- > Carrier TM 1000 w/Genesis MMD remote evaporator or Thermo King SBIII SR TCI13 WE
- > Air return bulkhead on front wall

Options:

Center Divide Systems, Moveable Bulkheads with Fan Kits, Lift gates, Air Ride, Temperature Recording, and Monitoring Systems.